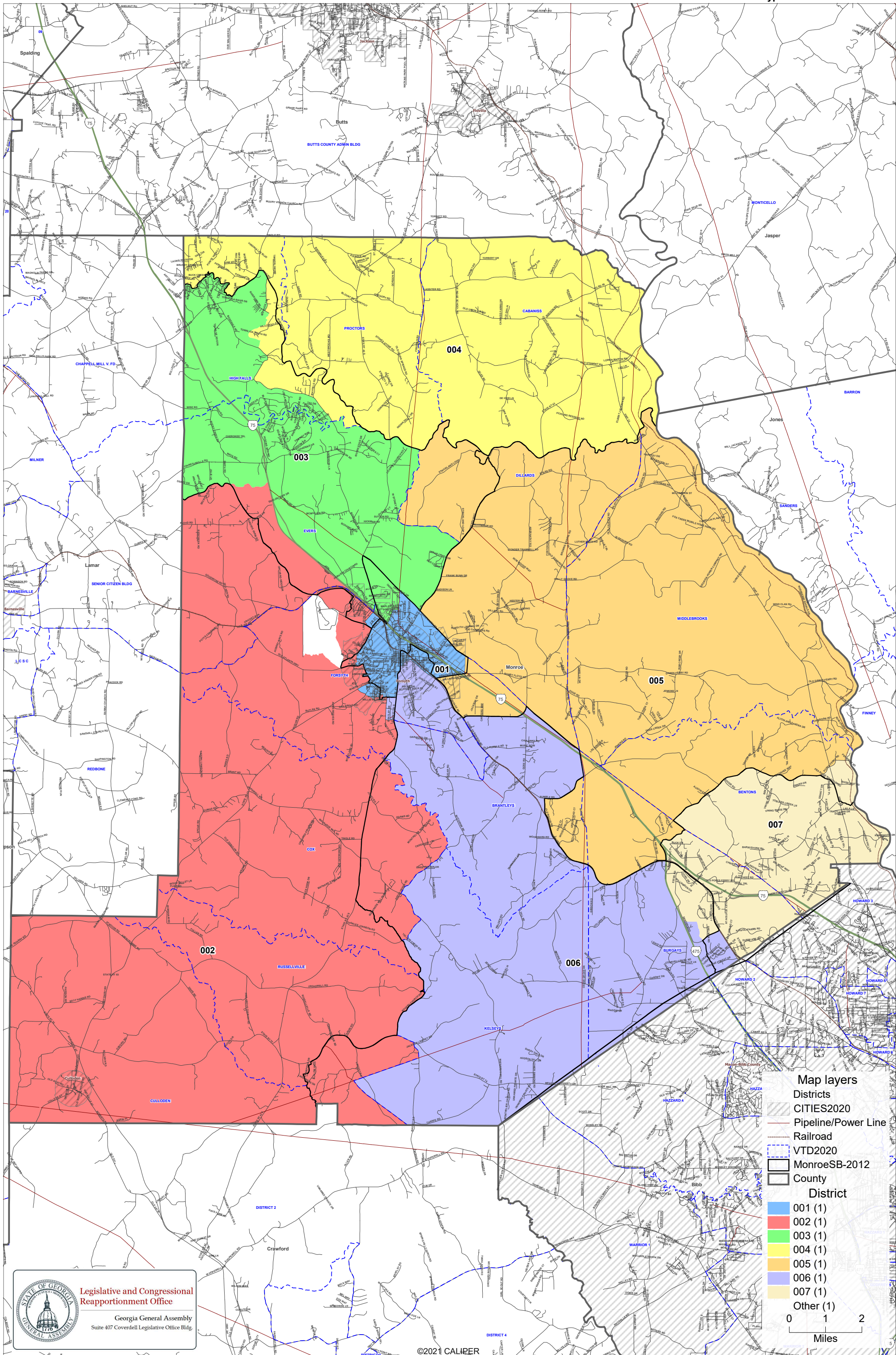


Monroe School Board Districts

Client: Monroe
Plan: MonroeSB-Draft1-2021
Type: Local



Legislative and Congressional Reapportionment Office
Georgia General Assembly
Suite 407 Coverdell Legislative Office Bldg.

Map layers

- Districts
- CITIES2020
- Pipeline/Power Line
- Railroad
- VTD2020
- MonroeSB-2012
- County

District

- 001 (1)
- 002 (1)
- 003 (1)
- 004 (1)
- 005 (1)
- 006 (1)
- 007 (1)
- Other (1)

0 1 2
Miles